

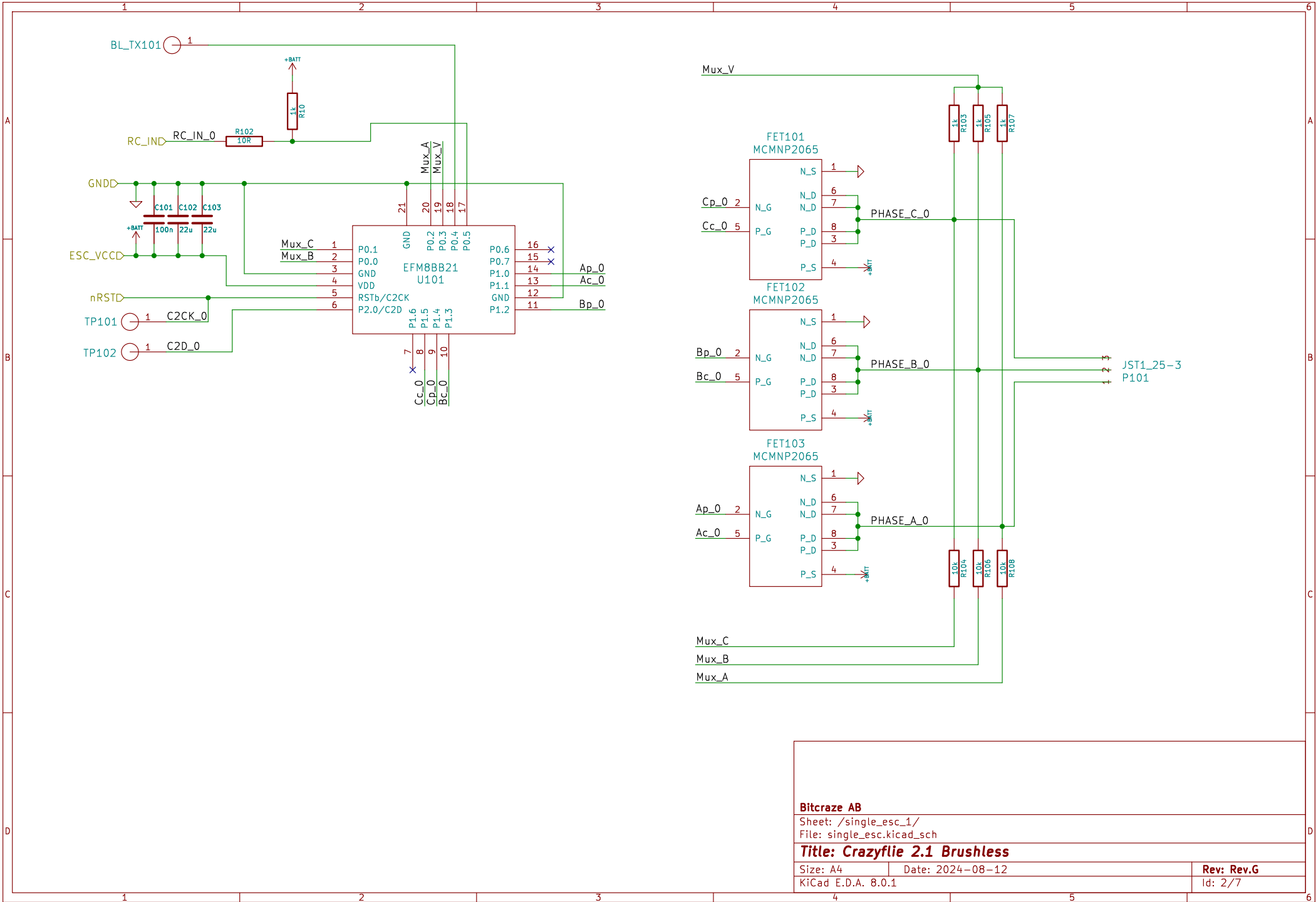
0xBC

Main CPU, motor control and connectors
 Licenced under CC-BY-NC-SA 4.0

Bitcraze AB
 Sheet: /
 File: tern.kicad_sch

Title: Crazyflie 2.1 Brushless

Size: A4	Date: 2024-08-12
KiCad E.D.A. 8.0.1	Rev: Rev.G Id: 1/7



Bitcraze AB

Sheet: /single_esc_1/
File: single_esc.kicad_sch

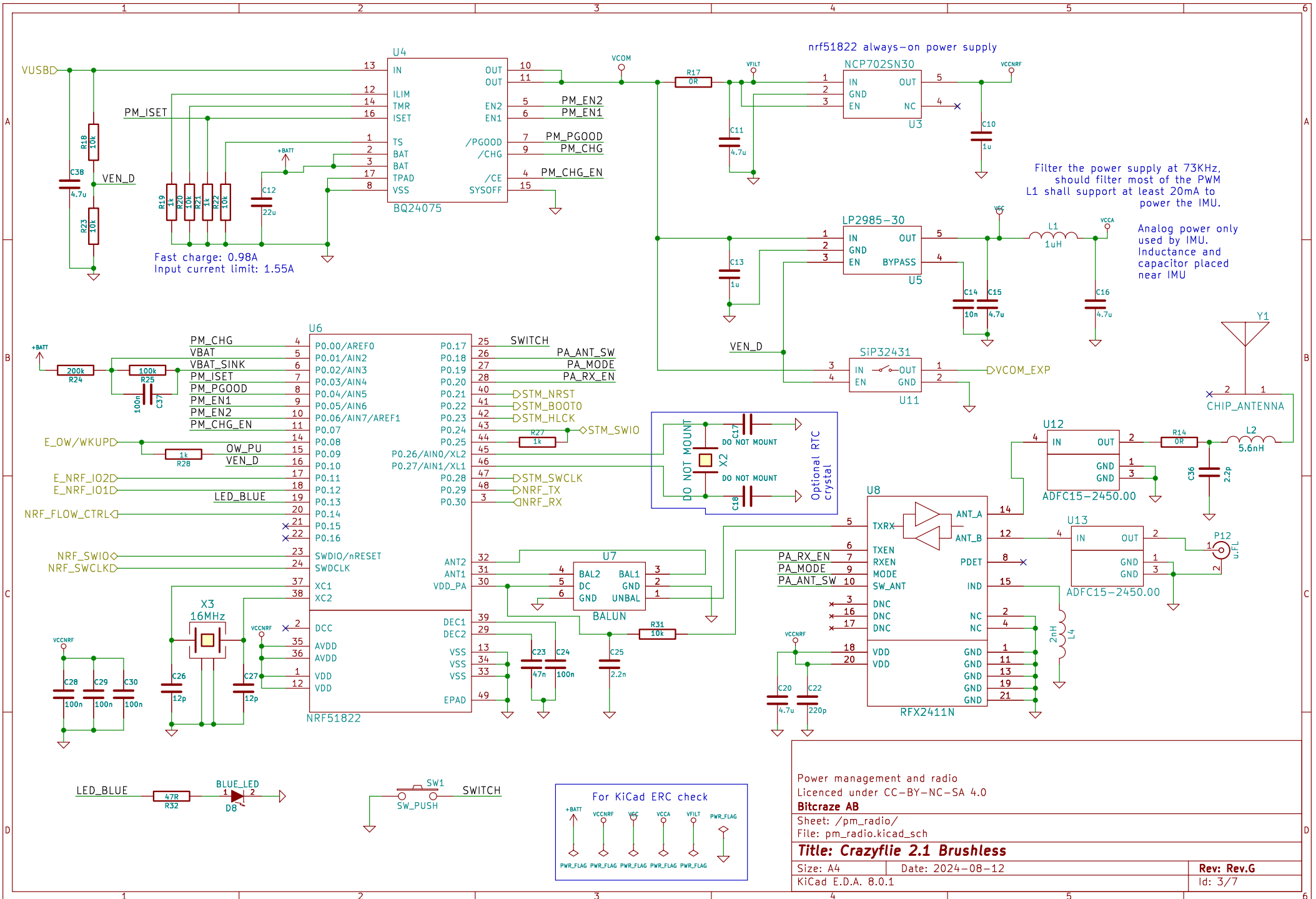
Title: Crazyflie 2.1 Brushless

Size: A4 Date: 2024-08-12

KiCad E.D.A. 8.0.1

Rev: Rev.G

Id: 2/7



Power management and radio
 Licensed under CC-BY-NC-SA 4.0

Bitcraze AB

Sheet: /pm_radio/
 File: pm_radio.kicad_sch

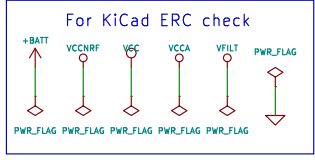
Title: Crazyflie 2.1 Brushless

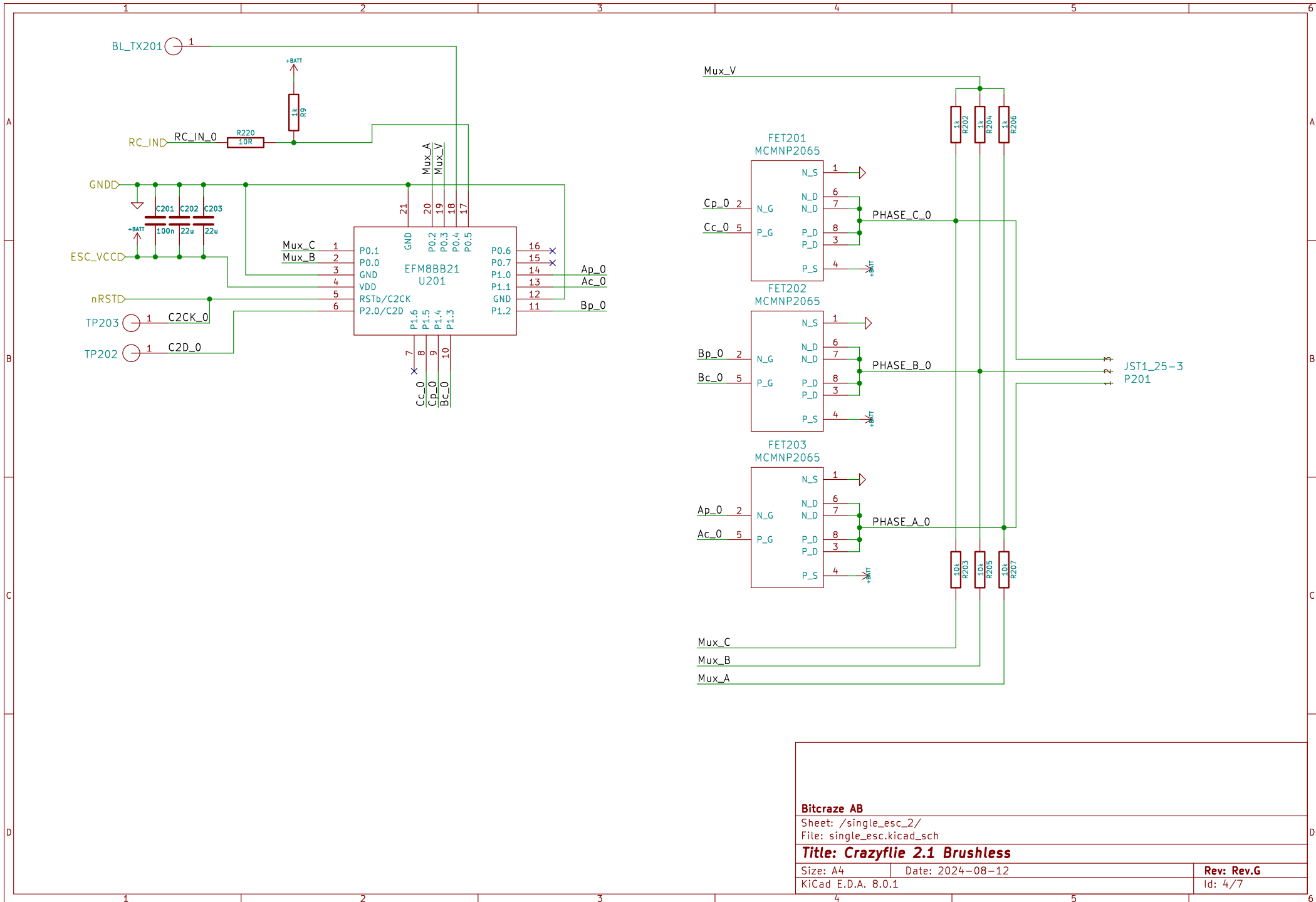
Size: A4 Date: 2024-08-12

KiCad E.D.A. 8.0.1

Rev: Rev.G

Id: 3/7





Bitcraze AB

Sheet: /single_esc_2/
File: single_esc.kicad_sch

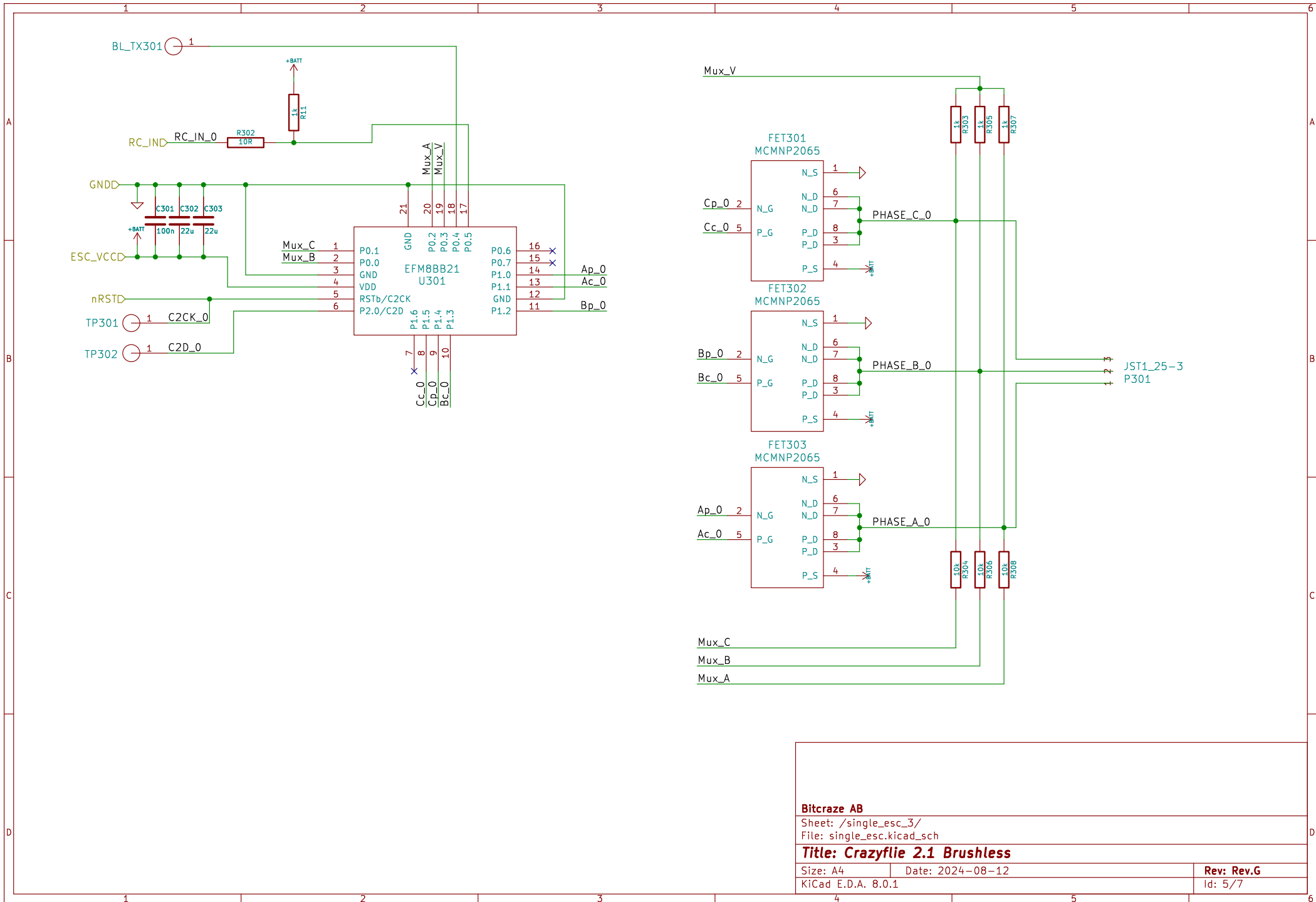
Title: Crazyflie 2.1 Brushless

Size: A4 Date: 2024-08-12

KiCad E.D.A. 8.0.1

Rev: Rev.G

Id: 4/7



Bitcraze AB

Sheet: /single_esc_3/

File: single_esc.kicad_sch

Title: Crazyflie 2.1 Brushless

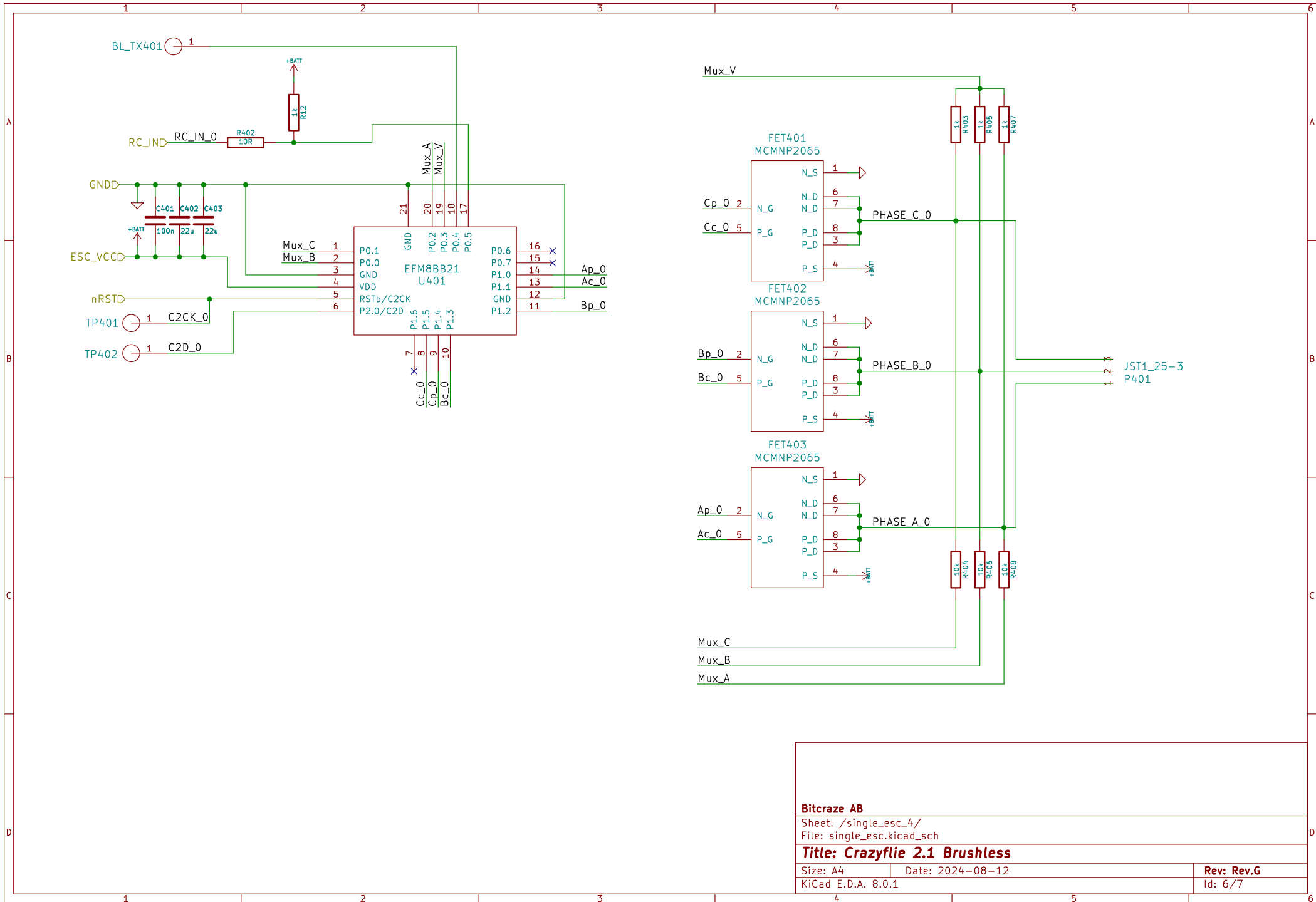
Size: A4

Date: 2024-08-12

Rev: Rev.G

KiCad E.D.A. 8.0.1

Id: 5/7



Bitcraze AB

Sheet: /single_esc_4/

File: single_esc.kicad_sch

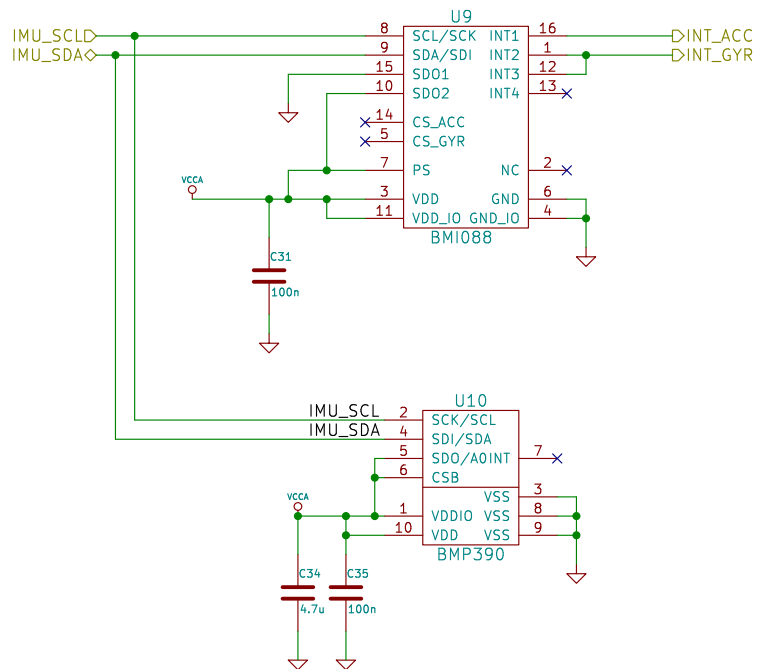
Title: Crazyflie 2.1 Brushless

Size: A4 | Date: 2024-08-12

KiCad E.D.A. 8.0.1

Rev: Rev.G

Id: 6/7



Please note the following about the Crazyflie expansion connectors:
 * VCOM is power directly from the battery/USB and is not regulated
 * VCC is regulated to 3.0V
 * VUSB is connected directly to the USB which means this will supply at 4.5–5.5V when the USB is connected and can be used for charging the battery when the USB is not connected

Licensed under CC-BY-NC-SA 4.0

Bitcraze AB

Sheet: /imu/
 File: imu.kicad_sch

Title: Crazyflie 2.1 Brushless

Size: A4 Date: 2024-08-12

KiCad E.D.A. 8.0.1

Rev: Rev.G

Id: 7/7